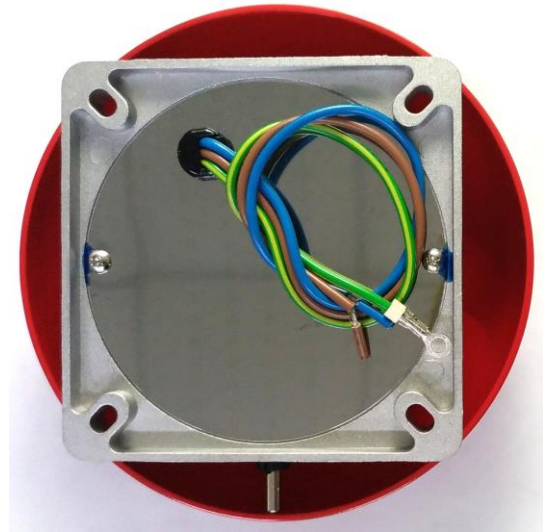


ALARM BELL

Model No:MB-6B-110-R



ELECTRICAL CHARACTERISTICS OF MODEL NO:MB-6B-110-R

Operation Voltage	110 VAC(Typical)
Operation Current	60mA ± 20%
S.P.L(at 3 ft)	88 ± 3 dB
Housing Material	Aluminum alloy & Iron paint
Gong Color	Red
Continue Operation Test	Over 4 hours(at 110 VAC)
Lead Wire	1015 #18 20CM
Weight	860g
Packing:	20PCS/1CTN